

Historic, Archive Document

Do not assume content reflects current scientific knowledge, policies, or practices.

62191
=14503

Wilshire Gardens

HOQUIAM
WASHINGTON

TUBEROUS BEGONIAS

Tuberous begonias are growing in popularity each year because more and more people are finding that the luxuriant, expensive-looking plants are not so difficult to grow as they had imagined. Begonias are ideal in any shady spot in your yard, or in pots, hanging baskets and porch boxes. Our complete and easy-to-understand instruction bulletin is packed with each order, free of charge. These are all largest size, West Coast grown tubers for biggest and most colorful blooms.

Largest size tubers: 45c each, \$4.50 dozen

DOUBLE CAMELLIA FLOWERED—The most popular of all, with large, double flowers resembling camellias. Colors available: White, pink, rose, yellow, blush, apricot, orange, dark red, scarlet, light salmon, dark salmon, cardinal red, flame orange, crimson rose, American Beauty, and mixed. Please specify which you want so we can label them for you.

CRISPA OR SINGLE FRILLED—Profusely frilled and ruffled single flowers (see illustration). Colors: White, yellow, pink, scarlet, rose, salmon, and mixed. Please specify.

CRESTED TYPE (Cristata)—Beautiful show type plants with large, strongly crested blooms. Available in mixed colors only.

CARNATION TYPE (Fimbriata)—Full double type with each petal fringed like a carnation. Colors: White, blush pink, rose, yellow, orange, scarlet, light salmon, dark salmon, crimson rose, red salmon, and mixed. Please specify so we can label colors separately.

HANGING BASKET TYPE—Showy, double, medium size flowers with attractive trailing stems suitable for hanging pots and window boxes. Colors: Pink, rose, salmon, yellow, scarlet, apricot, orange and mixed. Please specify.

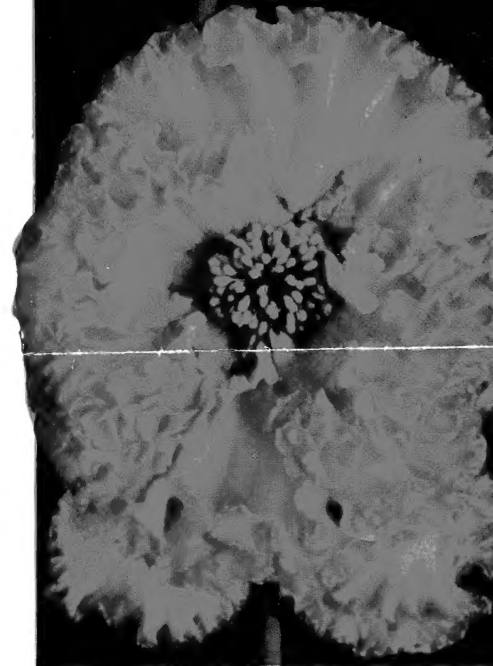
DOUBLE PICOTEE—Camellia type double blooms with two-tone colors. Inner parts light, with picotee edge of pink, rose, salmon, apricot or red. Correctly labeled.

MARGINATA—Frilled type in two-tone colors, generally white with pink edge or salmon with copper edge. Mixed colors only.

MARMORATA—Double camellia flowered begonias beautifully mottled red and white.

MULTIFLORA—An extremely free-blooming variety. Many bright colors, in mixture.

ROSE-BUD—Entrancing in the bud stage, like perfect rose buds. Usually in two shades, the back of the petal being darker than the face. Mixed colors only.



BEGONIAS: Camellia (above), Crispa (below)

BELGIAN TUBERS

Inferior to West Coast begonias in flower and plant, but less expensive. 1/4 to 1/2 in. tubers, Camellia Flowered, mixed colors only, \$1.50 Dozen

FANCIEST, NAMED TUBEROUS BEGONIAS

To those of you who enjoy the newest and finest we offer the following named varieties. Supplies of these very special strains are strictly limited, so order early. Prices on all varieties listed below: Each \$1.00, 3 for \$2.75, Dozen, \$10.00

AUTUMN GLOW—Huge, Cristata type blooms in apricot with contrasting crests of deep copper. Flowers measure up to 10 inches across!

FASCINATION—A gorgeous white Crispa type flower with a distinct Marginata or Picotee edge in pink. Very lovely.

ROSE DAWN—Very large, ruffled flowers of double form. The color is bright rose-pink, and the blooms resemble nothing so much as a beautiful, full blown rose.

RED TRIUMPH—Exceptionally large, beautifully ruffled Double Camellia type flowers with velvety textured, ruby-red petals.

SUNSET—A profusely frilled Crispa type bloom in light copper with a striking scarlet edge.

STARS AND STRIPES—A prolific plant with a tendency toward the Multiflora characteristics, carrying a profusion of brick red flowers daintily speckled white.





TROUBLE-FREE, GRACEFUL PLANTS

STARTER COLLECTION

For the gardener who wants an inexpensive yet representative hemerocallis group.

D. D. Wyman Golden Cressida
Bay State Florham J. T. Russell
Margaret Perry

7 Plants One of each variety, value \$3.15, for just **\$2.50**

ANNA BETSCHER—Large flower of rich orange-yellow shaded reddish brown. Height about 3 ft. Midsummer bloom. Each 50c, 3 for \$1.35

APRICOT—Sweet-scented, pale cadmium-yellow flowers beginning in mid-May. Long blooming period. 2 ft. tall. Each 40c, 3 for \$1.10

AUREOLE—Orange-yellow flowers on 2½ ft. plants. Begins its long blooming season in May. Each 35c, 3 for \$1.00

AUTUMN RED—A long-blooming variety with open, semi-flaring flowers of rich, velvety red. In August it has 15 to 20 flowers at a time on well-branched stalks. Grows about 40 in. tall. Each \$4.00

BAGDAD—A tall-growing variety with a bold and striking flower of glowing coppery red over orange; a darker blotch and prominent midribs. Height 4 ft. Mid-summer. Each 75c, 3 for \$2.00

BAY STATE—A popular large-flowered variety of deep, glistening yellow. The plant is broad-leaved and sturdy, about 3½ ft. high; long, mid-summer blooming season. Each 50c, 3 for \$1.35

BLACK FALCON—Most unusual collector's item. Very large, dark black-red, open flowers with wavy edges and a shallow, pale yellow cup. Three ft. tall; mid-summer bloom. Each \$6.00

BOUTONNIERE—Small flowers of light orange suffused with peach. Blooms in mid-summer. Each 50c, 3 for \$1.35

CABALLERO—A gay and brilliant bi-color of vermilion red and gold. Excellent mid-summer blooms. Each \$2.50

CHENGTU—Very popular mid-summer variety with a coppery orange-red base color and a velvety red mid-zone. Each \$1.00, 3 for \$2.50

CINNABAR—Rosy brown-red flowers with a yellow throat. The plants increase rapidly, and have a long blooming season starting in July. Each 60c, 3 for \$1.65

CLEO—This one is a lovely pastel pink which comes into bloom in the late summer season. Each \$2.00

CRESSIDA—Rich, golden, star-shaped flowers of immense size. Luxuriant foliage; flower stems about 3 feet tall. Blooming season during July and August. Each 35c, 3 for \$1.00

D. D. WYMAN—A superb golden yellow with a tawny splash on the petals. Large flowers on 3-foot stems. July and August blooms. Each 35c, 3 for \$1.00

HEMEROCALLIS---DAYLILIES

Daylilies in the last few years have been developed to a high degree of perfection to make them deserving of their more formal name, hemerocallis. In contrast to the older varieties you already know, there are the new ones boasting a delightful fragrance, those that will open even on dark, cloudy days, and those that will stay fresh as cut flowers, making new and unusual floral arrangements possible. There is now an intriguing color range and a widely adaptable variation in height. Some multiply rapidly if you wish to fill in an area quickly. Others multiply slowly if you wish them to stay put in a small space. An armchair gardener's delight, they are disease-free and pest-free; they will thrive in any soil even under mistreatment and neglect. For quickest effect, plant in groups of three of a kind.

DAWN—A very large flower of fulvous rose with a sulphur-yellow base. Plenty of blooms during the mid-summer period. Each 60c, 3 for \$1.65

E. A. BOWLES—Large, flat, flaring flowers of rich, reddish orange blended with salmon and paler orange. A spectacular variety. Each 75c, 3 for \$2.00

FLAVA—Known to many as the "Lemon Lily", this variety blooms in late May with the poppies and lupines. The blossoms are lemon-yellow and are very fragrant. Plants grow 3 feet tall. Each 45c, 3 for \$1.25

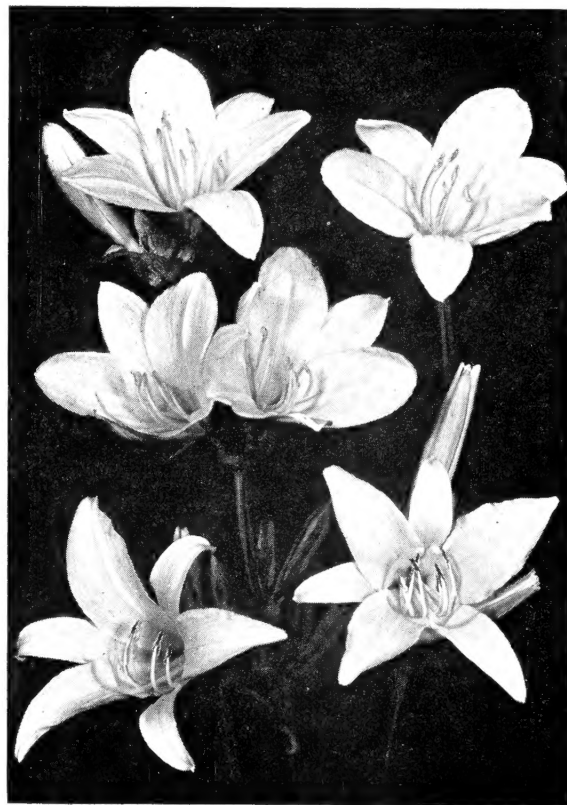
FLORHAM—A large blossom of deep gold. Blooming season in June and July. Plants grow about 3 feet tall. Each 40c, 3 for \$1.10



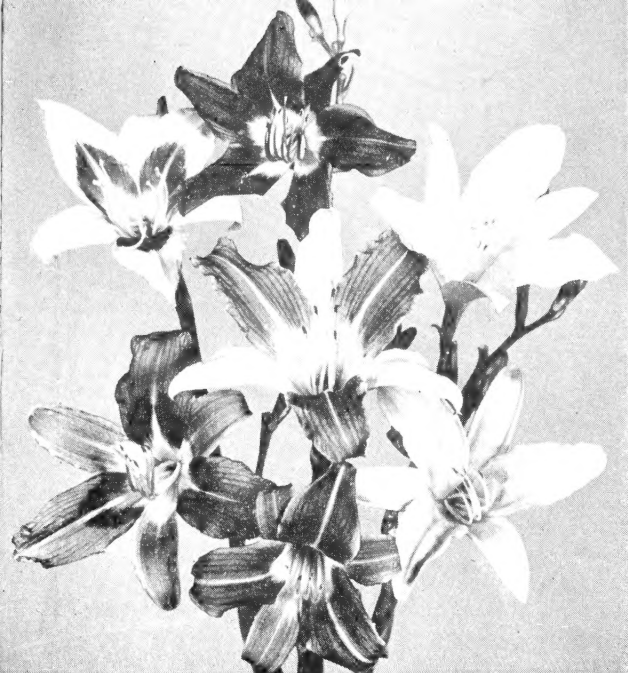
FULVA ROSEA (Rosalind)—This lovely rose-pink variety is one of the most beautiful of all daylilies. The flower is of medium size; the height of the plant about 3½ feet. Since the plants are vigorous growers with broad leaves and a large root system it needs no special care to produce its rare flowers. It is a good propagator. Blooms appear in July and August. Refer to color illustration on the front of this catalog. Each \$3.00, 3 for \$8.50

GAY TROUBADOUR—Large, flaring, bi-colored flowers. The petals are bright red with a strong yellow mid-stripe; the sepals are maize yellow suffused with red. New and choice. Each \$5.00

GEORGE YELD—One of the most popular of the polychromes and voted one of the six most popular varieties in all classes. A very large flower of pale fulvous rose with sepals of bright orange-yellow. Height 3 feet. Flowering season July and August. See illustration on the opposite page. Each 60c, 3 for \$1.55



HEMEROCALLIS, OPHIR



DAYLILIES NOW IN VARIED COLORS AND MARKINGS

RED, LEMON & GOLD COLLECTION

Beautiful assortment of hemerocallis colors.

Anna Betscher
Rajah
Mandarin

Aureole Goldeni
E. A. Bowles

6 Plants One of each variety, value \$3.45, for **\$2.75**

- GOLDENI—A free-flowering type that multiplies rapidly. The flowers are medium size and of good substance. Color, deep orange; height 3 ft.; flowering season, July. Each 40c, 3 for \$1.10
- HEATHER ROSE—A rose-pink daylily of surpassing beauty. A Nesmith hybrid, blooming in mid-summer. Each \$5.00
- HYPERION—Considered one of the finest of all daylilies. The flowers are very large and waxy and of a lovely soft canary-yellow shade. Height 4 ft.. Blooms in late July. Each 65c, 3 for \$1.75
- J. T. RUSSELL—The petals are lemon-yellow, marked with cinnamon-red; the sepals are clear lemon. Plants are 3 ft. tall, and bloom in May and June. Each 75c, 3 for \$2.00
- LEMONA—Pale lemon-yellow. One of the earliest varieties, flowering in late June. Height about 3 ft. Each 35c, 3 for \$1.00
- LINDA—A Stout hybrid. Ruffled petals, golden yellow at the base, with a red eye. Each \$1.50
- MANDARIN—Large, aristocratic flowers of clear, pale yellow. Tall, 4½ ft. plants. July blooms. Each 75c, 3 for \$2.00
- MARGARET PERRY—Tall plants with a very long blooming season, from July to September. Flowers rose-buff lined with red. Multiplies very rapidly. Each 40c, 3 for \$1.10
- MIKADO—One of the finest. Mahogany-red blotch on soft orange petals, creating a bold, striking contrast. Grows about 3 ft. tall and blooms in June and July. Each 45c, 3 for \$1.25
- MISCHIEF—A Russell hybrid blooming in late summer. Dark red, full petals with yellow throat blotch. Each \$1.00; 3 for \$2.50

NOVELTY COLLECTION

Six of the newest and most exciting hemerocallis, for the hobbyist who insists on the best plant material.

Mischief
Rocket

Autumn Red
Cleo

Linda
Sonny

6 Plants One of each variety, value \$11.25, for only **\$9.25**

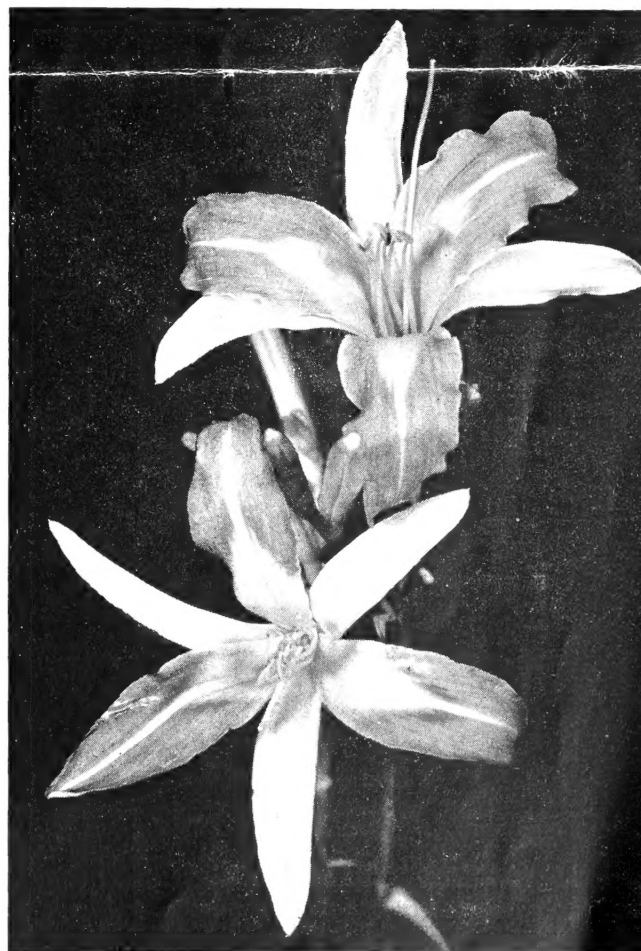
NATIONALLY ADVERTISED COLLECTION

In order to give our regular customers the same bargain opportunity as those who purchase from our magazine advertisements, we are repeating this hemerocallis advertising collection offer here. Five excellent varieties are included, each separately labeled, carefully packed, and accompanied by complete planting instructions.

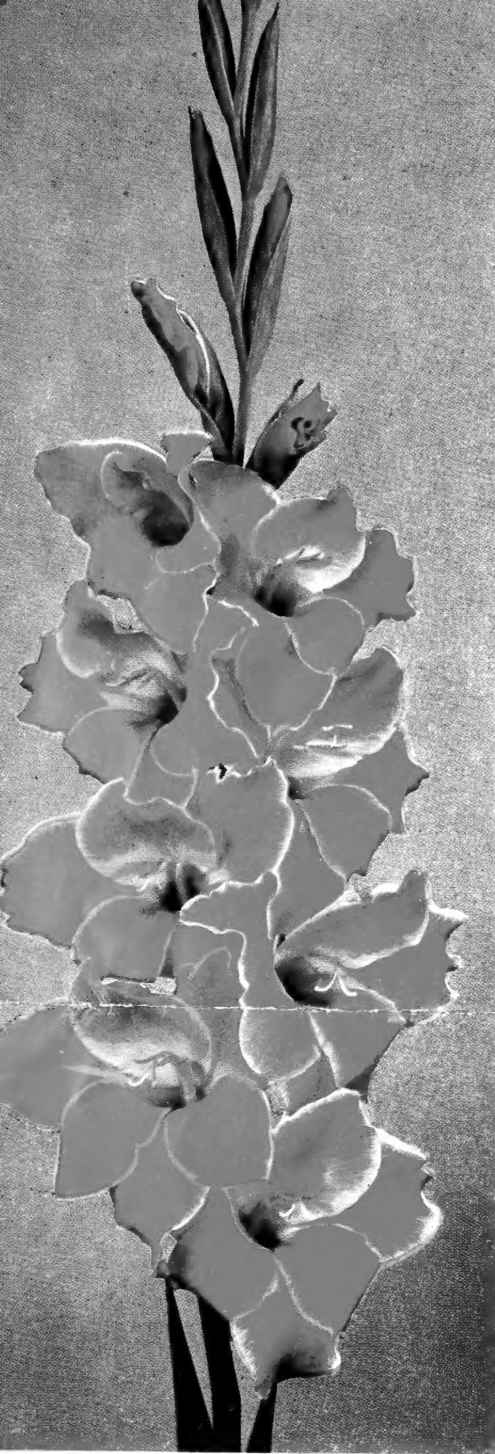
Autumn Red **Hyperion** **Chengtu**
Mikado **White Lady**

5 Plants One of each variety, value \$6.25, for only **\$5.00**

- OPHIR—One of the six most popular daylilies. Wide, deep flowers, 5 in. across; clear, golden yellow color. Plants grow 4 ft. tall and bloom in July. Illustrated on the opposite page. Each 50c, 3 for \$1.35
- RAJAH—A daylily of the polychrome type, blooming in mid-summer. Flowers are delicate orange, veined red and with a garnet brown eye. Height 3½ ft. Each 75c, 3 for \$2.00
- ROCKET—Tall, well-branched stalks with large, deep crimson flowers overlaid purple. Frequently 3 flowers open at once on a stem. Three ft. tall. July blooms. Each \$3.00
- SIR MICHAEL FOSTER—Large, ruffled, apricot colored flowers in July and August. Four feet tall. Each 50c, 3 for \$1.35
- SONNY—Firm textured, light yellow flowers with recurving petals. Blooms July and August; 3 ft. tall. Each \$1.25; 3 for \$3.00
- SYLVIA—A large bi-color, blooming in early summer. Rosy-pink petals, yellow sepals. Each \$1.00
- VULCAN—Light, velvety maroon with faint golden brown midrib and orange throat. July. 4½ ft. tall. Each \$3.00
- WAU-BUN—Broad, curled petals of light yellow sprinkled with fulvous red. Very unusual. July bloom. Each 65c, 3 for \$1.75
- WHITE LADY—Tall, graceful plant producing many pale, creamy yellow flowers in July. Each \$2.50



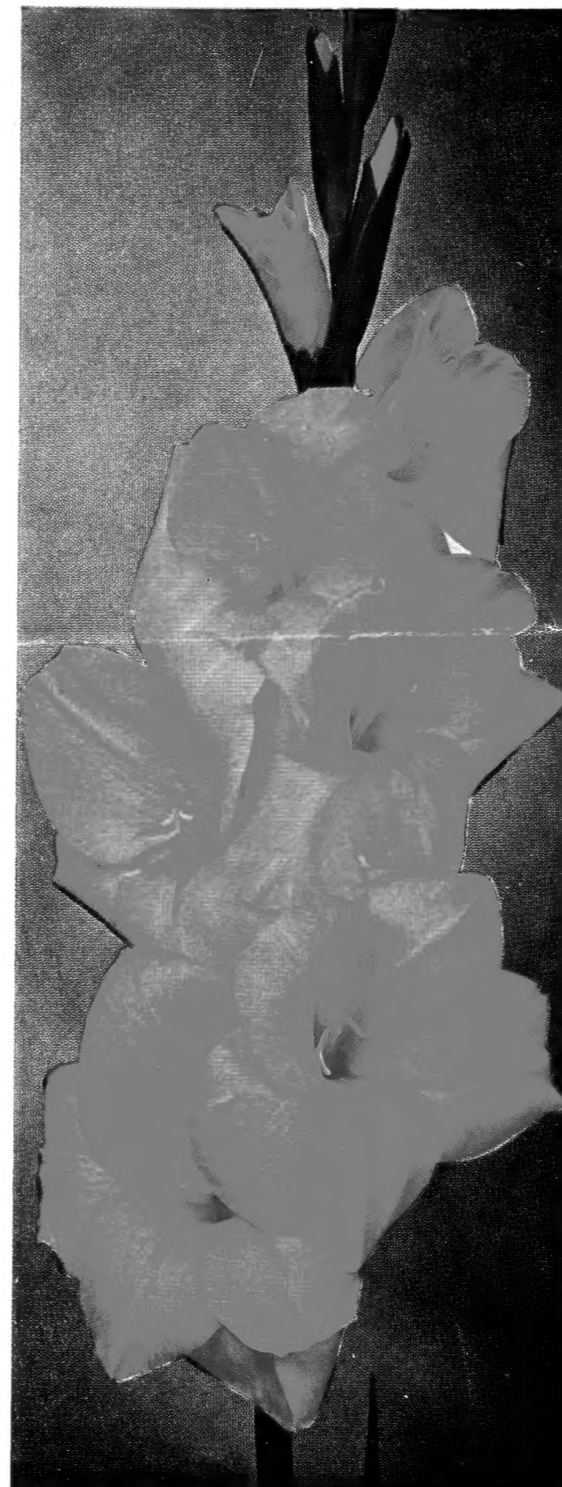
HEMEROCALLIS, GEORGE YELD



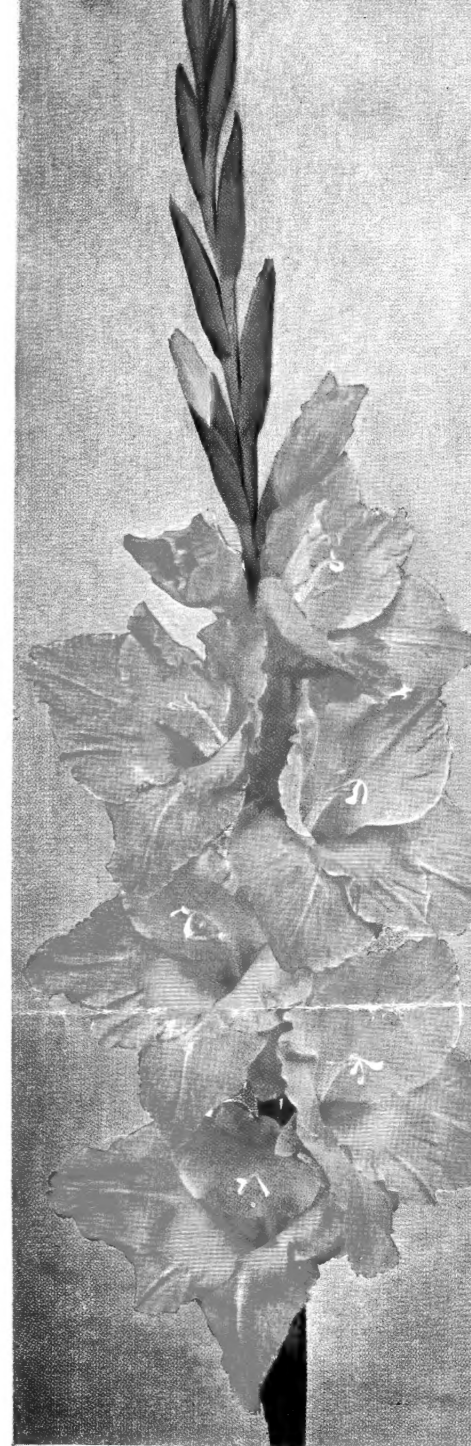
CHAMOUNY



PURPLE SUPREME



SPOTLIGHT



MARGUERITE

GLADIOLUS

The 1950 Wilshire Gardens catalog brings good news for Glad enthusiasts. Prices of almost all varieties are substantially reduced. All bulbs are clean, healthy, top size and high crowned; all are treated against thrip and guaranteed to produce gorgeous, top-size blooms this season. Six bulbs may be purchased at half the dozen price; 100 bulbs for the price of 7 dozen. Cultural bulletin enclosed free with every order.

- ALGONQUIN—A tall brilliant scarlet; an early bloomer; fine for cut flowers. 3 for 30c, Doz. \$1.00
- ATHLONE—A lovely combination of pinkish buff and cream. A new and outstanding variety, with as many as 12 florets open at once. 3 for 40c, Doz. \$1.50
- BADGER BEAUTY—A very fine lavender. One of the newer varieties. 3 for 35c, Doz. \$1.10
- BAGDAD—A beautiful shade of smoky old rose. Huge flowers on long, strong stems. 3 for 25c, Doz. 80c
- BARCAROLE—Large blooms of clear salmon-orange; petals ruffled; no markings. 3 for 25c, Doz. 80c
- BEACON—Clear bright rose-red with a large cream blotch in the throat. 3 for 25c, Doz. 80c
- BLACK OPAL—Very fine dark red; long spikes. 3 for 30c, Doz. \$1.00
- BLAZE—Medium tall, pure, intense scarlet-red. 3 for 25c, Doz. 80c
- BLUE BEAUTY—One of the best of the medium blues. 3 for 25c, Doz. 80c
- BURMA—A tall glad carrying huge, heavily ruffled, deep rose flowers. All who see it exclaim over it. It is a beauty. 3 for 40c, Doz. \$1.20
- CANDY HEART—A lovely shade of pink with a carmine blotch. Large, well placed flowers. 3 for 25c, Doz. 80c
- CASABLANCA—Pure clear white with ruffled florets. 3 for 30c, Doz. \$1.00
- CHAMOUNY—A prize-winner. Tall, dark rose with a silver edging on each petal. See illustration. 3 for 25c, Doz. 85c
- CHARLES DICKENS—Violet-purple flowers with darker blotch; 10 to 12 florets open at once. 3 for 25c, Doz. 85c
- CHIEF MULTNOMAH—Very fine, large, smoky red with darker markings and light red blotch. 3 for 25c, Doz. 90c
- COMMANDER KOEHL—Deep, rich red. Massive. 3 for 25c, Doz. 90c
- COMMANDO—A new one. Very striking scarlet. Large. 3 for 40c, Doz. \$1.50
- CORONA—A lovely pastel; creamy white shading to a deeper cream in the throat with a rose picotee edge. 3 for 30c, Doz. \$1.00
- COVER GIRL—Giant pink. We sold out of this popular, recent introduction very early last year. Order early. 3 for 30c, Doz. \$1.00
- ELIZABETH THE QUEEN—Clear mauve with darker lines in throat. Ruffled. 3 for 35c, Doz. \$1.10
- ETHEL CAVE COLE—A large, light pink with many flowers open at one time. 3 for 25c, Doz. 85c
- FLYING FORTRESS—Outstanding and entirely different gray smoky. Try this one. Each 45c, Doz. \$4.50
- GENERAL EISENHOWER—Huge 5 ft. spikes of deep begonia rose. Individual florets 6 in. across. No. 2 size bulbs only. Each 30c, Doz. \$3.00
- GLAMIS—Beautiful pink with sharply pointed petals. 3 for 35c, Doz. \$1.10
- GOLDEN CHIMES—Large flowered light yellow. 3 for 25c, Doz. 90c
- GREENLIGHT—Huge ruffled florets of palest yellow. Buds are tinted pale green. 3 for 25c, Doz. 90c
- GRETA GARBO—Tall spikes of beautiful cream-rose. 3 for 25c, Doz. 80c
- HINDENBURG'S MEMORY—Fine deep red with touch of black to make the petals velvety. 3 for 30c, Doz. 95c

- HOCUS POKUS—New and very early. Deep golden yellow with a large red throat blotch. The bright spot in your garden. Second size bulbs only. 3 for 35c, Doz. \$1.20
- HOLLAND'S GLORY—Tall salmon-pink with yellow throat. One of the best in its class. 3 for 35c, Doz. \$1.10
- J. S. BACH—Salmon-red with white midrib. Large flowered and early. 3 for 25c, Doz. 85c
- KING LEAR—Large, beautifully ruffled, deep, velvety purple. Early blooms. 3 for 25c, Doz. 80c
- MAID OF ORLEANS—Standard white. 3 for 25c, Doz. 80c

- MARGARET BEATON—Large white flower with cherry blotch in the throat. 3 for 25c, Doz. 85c
- MARGUERITE—Charming watermelon-pink with cream throat. See illustration. 3 for 35c, Doz. \$1.10
- MRS. MARK'S MEMORY—Very large rose-purple with small, dark carmine throat mark. Excellent. 3 for 25c, Doz. 85c
- MYRNA—Heavily ruffled ivory white. Medium early. 3 for 25c, Doz. 85c
- PANDORA—Soft geranium pink, with a darker blotch. 3 for 25c, Doz. 90c
- PICARDY—A beautiful apricot pink with many blooms open at one time. For many years the most popular of all gladioli. 3 for 25c, Doz. 85c
- PROSPERITY—Beautifully ruffled new sport of Picardy, more rosy than its parent. 2nd size only. Each 60c, Doz. \$6.00
- PURPLE SUPREME—Bright purple with vigorous plants. 3 for 25c, Doz. 80c
- RANGITATA—Very early salmon-red from Australia. 3 for 25c, Doz. 85c
- RAVEL—Sensational new blue. The best we've seen. Each 25c, Doz. \$2.50
- RED CHARM—Crimson-red, slightly deeper than medium-red; one of the best in its class. 3 for 25c, Doz. 90c
- ROSA VAN LIMA—Light rose-pink with a slightly lighter throat. Medium early. 3 for 25c, Doz. 80c
- SHIRLEY TEMPLE—Immense, heavily ruffled cream with a deeper cream throat. Lovely pastel. 3 for 25c, Doz. 85c
- SNOW PRINCESS—Milky white, shading to a light cream in the throat. Welcome newcomer. 3 for 25c, Doz. 80c
- SPIC AND SPAN—Tall, ruffled, deep pink. No glad since Picardy has attracted so much attention. Ten florets open at one time. 2nd size only. Each 90c, Doz. \$9.00
- SPOTLIGHT—Large yellow blooms with fiery red blotch. See illustration. 3 for 40c, Doz. \$1.20
- SURFSIDE—Ruffled white slightly penciled lavender. 3 for 25c, Doz. 85c
- TAKINA—Giant light purple from Australia. 3 for 25c, Doz. 80c
- UHU—The finest smoky yet introduced from Holland. Large florets, long stems, and beautiful coloring in soft gray-brown. 3 for 45c, Doz. \$1.50
- WHITE GOLD—Massive flowers of rich cream blending into a gold throat. Very tall. 3 for 25c, Doz. 85c
- YELLOW EMPEROR—The best deep yellow. Large florets. 3 for 25c, Doz. 85c
- YELLOW HERALD—One of the newer yellows. Very pleasing flower with nicely ruffled florets. 3 for 30c, Doz. \$1.00

"NEW NAME" GLADIOLUS COLLECTION

Be the first in your neighborhood with the new varieties. Here are 7 beauties offered for the first time this year.

Athlone **Commando** **Prosperity**
Flying Fortress **Spic and Span**
Gen. Eisenhower **Hocus Pokus**

7 Bulbs 1 of each variety, \$2.40 value \$2.70, for
21 Bulbs 3 of each variety, \$6.30 value \$7.50, for
84 Bulbs 12 each var., \$21.25 value \$26.70, for

COLOR-BALANCED RAINBOW MIXTURE

Hand selected from excellent, named varieties to create good color balance. NOT a catch-all of jobbers' overstocks.

Top Size No. 1 Bulbs
15 for \$1.00, 100 for \$6.00

Second Size Bulbs
 (Slightly smaller Blooms)
18 for \$1.00, 100 for \$5.00

There is a reason . . .

for the gratifying number of cards and letters we receive in the mail each week. You see, Wilshire Gardens is still a relatively small concern. Even though we carry national magazine and newspaper advertising and have several foreign countries represented in our customer files, the three of us still own and operate all phases of the Gardens. Some very competent people, mostly neighbors, help us during the busy seasons. However, we read and check each card, letter and order received each day. In addition, we recheck, assemble and pack all orders, thus maintaining and improving the standards we have established in the last fifteen years. This extra personal attention we give each shipment is our hobby; also, family pride and a very genuine interest in our customers' wishes help to explain why . . . "there is a reason".

FRANK STAATS WILSON
CHAS. N. WILSON

YOUR FALL CATALOG

The large and colorful Wilshire Gardens fall catalog will contain not only the proven varieties which we have grown for years, but also many new and unusual Daffodils, Narcissus, Tulips, Lilies, Hemerocallis, and numerous novel and rock garden bulbs. When you place your order this spring a copy is reserved for you. If, for some reason, you do not order this spring, send a post card to reserve your copy.

RANUNCULUS

Beautiful full double flowers in many shades. In severe climates they may be started in pots or planted out as early as possible in the spring. In the Northwest February planting is best. Cover only 2 inches and keep the ground moist as the leaves are very delicate and will not come through the ground if it becomes dry and crusted.

RED SHADES PINK SHADES
YELLOW SHADES WHITE SHADES
MIXED—All shades.
Largest size bulbs, per doz. 75c,
per 100 \$5.25



RANUNCULUS



MONTBRETIA

MONTBRETIAS

Dainty, colorful spikes of tiny blossoms, hybridized to yield a greater range of color and a wealth of pleasing and disease-resistant foliage both before and after the long blooming period. Excellent among shrubs and perennials in full sun or light shade and with plenty of moisture. Our cultural bulletin No. 8, "Hybrid Montbretias", will be enclosed with your order. Colors range from palest yellow to a deep, dark red. Mixed colors only. Doz. \$1.00

INFORMATION BOOKLETS

By special arrangement with Cecil Solly, we are able to offer his newly enlarged and revised informative booklets on the following kinds of flowers:

Tuberous Begonias
Gladiolus
Dahlias

These booklets are complete, concise, well-illustrated, and easy to understand. They cover between-season care as well as all other cultural information. They are only 30c each when shipped with your bulb order. If your order includes \$5.00 worth of begonias, we'll send the begonia booklet free, if you ask for it. The same offer applies to gladiolus and dahlias.

TERMS

We prepay delivery charges on all orders amounting to \$2.00 or more. On smaller orders add 25c to help cover cost of handling.

Remittance may be made by check or money order. Stamps on small orders only. Cash, unless letter is registered, sent at customer's risk.

Because of the extra time involved and the extra expense to the customer we have discontinued all C.O.D. shipments. WASHINGTON customers kindly remember 3% retail sales tax. NO TAX on out-of-state orders.

ANEMONES

Large, single, poppy-like flowers in gorgeous colors. The culture is similar to that of Ranunculus. Plant bulbs with the pointed end down and in a sunny location.

MONARCH DE CAEN—Mixed colors.

HIS EXCELLENCY—Red.

BLUE POPPY—Blue.

THE BRIDE—White.

ST. BRIGID—A double form of the Anemone. Also in gorgeous colors. Mixed only.

Large bulbs: Per doz. 85c,
per 100 \$6.00



DE CAEN ANEMONES



MINIATURE DAHLIAS

MINIATURES

All varied dahlia forms are to be found in this delightful class of 3 to 4-inch size flowers.

- BABY SAGAMORE—Decorative amber yellow suffused peach. Each 50c
- CORINNA—Pure lemon-yellow decorative flowers. Each 50c
- ELIZABETH PAPE — Popular salmon-pink cactus type. Each 50c
- FAIRY — Decorative rose-pink tinted lavender. Broad petals. Each 50c
- JEAN KERR—Pure white. Each 50c
- LILLY BELLE—Formal decorative type, clear pink. Each \$1.00
- LITTLE DARLING—Cactus type. Pale pink shading to cream. Each 60c
- LITTLE DIAMOND—Deep rose cactus type. Pointed petals. Each 50c
- LITTLE RED BIRD—Informal decorative deep red. Each 50c
- LITTLE SNOW QUEEN — Pure white cactus type. Each 50c
- MAH BABY—Formal decorative dark maroon. Each 50c
- MARKET JEWEL—Velvety scarlet cactus type. Each 60c
- MARKET QUEEN—Bright red petals tipped with white. Each 50c
- PERSIMMON—Rose-orange with pointed petals. Each 40c
- SANHICAN'S SWEETHEART—Pale yellow and peach. Each 40c
- SPIRIT—Broad, rose-red petals, tipped pure white. Each 65c
- SPUN SILK—Light pink cactus, white in center. Each \$1.00
- WHITE FAWN—Double, decorative, and pure white. Each 50c
- WINE DROP—Small, bright, wine-red flowers. Each 40c

DAHLIAS

PLEASE NOTE—Because DAHLIA TUBERS must be mailed later than most other bulbs we cannot accept orders for less than one dollar's worth of tubers. Packing and shipping expense will not allow the mailing of separate orders smaller than the above amount.



CACTUS DAHLIA



POMPON DAHLIAS

POMPONS

Exceedingly free-flowering little plants with 2 in. ball flowers.

- AMBER QUEEN — Rose and amber flowers, taller than most. Each 40c
- BANTAM—Brilliant scarlet, with small flowers and plant. Each 40c
- BIT O'LILAC—Light orchid. Each 40c
- BRUNETTE—Dark red, with a fine, velvety texture. Each 40c
- CHINA CUP — White petals, tipped purple. Each 50c
- INDIAN CHIEF—Dark wine-red, with white tipped petals. Each 40c
- JESSICA—Golden yellow, edged red. Very colorful variety. Each 40c
- JOE FETTE—Pure white. Each 40c
- LITTLE DAVID—Orange. Each 40c
- MARY MUNNS—Appealing dark orchid flowers. Each 40c
- ROSA WILMOUTH—A lovely shade of rose-pink. Each 40c
- SHERRY—A colorful, deep red-purple. Each 40c
- TAKA'S PURPLE—Very dark orchid. A rich color. Each 40c
- VIVID—Bright scarlet, larger than Bantam. Each 40c
- WEE PINK—A beautiful, soft pastel pink. Each 40c
- YELLOW GEM—Well formed, bright yellow flowers. Each 40c

MINIATURE DAHLIA COLLECTION

A fine assortment of colors and flower types.

Corinna	Elizabeth Pape	Jean Kerr
Little Red Bird	Mah Baby	Persimmon
6 Tubers	One of each, value \$2.90, for just.....	\$2.35

PASTEL POMPON COLLECTION

Six of the most beautiful pastels of the pompon group.

Joe Fette	Bit O' Lilac	China Cup
Yellow Gem	Rosa Wilmouth	Wee Pink
6 Tubers	One of each, value \$2.50, for just.....	\$2.00

MIGNON, COLLARETTE and NOVELTY DAHLIAS

- BISHOP OF LANDAFF—Brilliant scarlet duplex, dark red-green foliage which makes an attractive plant. Flowers about 3 inches across. Each 50c
- COLTNESS GEM—Very low-growing Mignon type; small flowers of intense, fiery red. Good bedding type. Each 50c
- HEMERIK—A low-growing orange-apricot Mignon type; flowers about 4 inches across. Each 50c
- HOLLANDIA—A dwarf bedding type about 18 inches high; flowers coral-red, 4 inches across. Each 45c
- KING OF THE BLACKS—A low-growing Mignon; flowers ruby-violet deepening to purple at the center. Each \$1.00
- MARREJAN—Very dwarf bedding Mignon, 16 inches tall; flowers 3 inches across and cream white in color. Each 65c
- MIES—Dwarf bedding type with a compact habit of growth; height 15 inches. A bold, shapely flower of deep lilac, and worth adding to your collection. Each 75c
- PARK BEAUTY—A dwarf, bushy plant measuring 20 inches. The flower is orange-coral, 3 1/2 inches across. Each 65c
- RIGNBENDE—A free flowering dwarf bedding plant. Flowers of the Mignon type in salmon shading to terra cotta. Three inches across. Each 65c
- ROQUENCOURT—A colorful orange-red flower, 2 1/2 inches across. Plants carry an attractive, dark, red-green foliage and grow about 20 inches high. Each 75c
- SUZETTE—A collarette dahlia in fuchsia red with collarette of a lighter shade; the flower is 2 1/2 inches across, and the plant about 20 inches tall. Each 75c

Large-Flowered DAHLIAS

Giant flowered types are listed on this page; small flowered kinds on the preceding page.

DECORATIVE TYPE

AMY BALLEGO—Bengal rose, shading to gold at the center. Well-grown flowers reach 14 in. across. Each 90c

AUTUMN SUNSET—Yellow blending to red. Large, informal flowers. Each 60c

BLUE RIVER—One of the most popular. Large, silvery lavender flowers. Each 60c

CLARA CARDER—Shaggy, vivid pink flowers on low growing bushes. Each 70c

D'ARCY SAINSBURY—Medium height bush with fine foliage. Large, perfectly shaped, pure white flowers. Each 65c

FREDA GEORGE—Large flowered informal type, orchid at the tips of the petals, shading to a cream center. Excellent cut flower. Each 75c

GREY DAWN—An 8 in. white flower with an overall shading of lavender, giving it the appearance of gray. Very pretty and different. Each 75c

MRS. GEO. LeBOUTILLIER—Giant flowers measuring up to one foot across. The color is rich carmine; stems are strong and erect. Each 75c

PINK GIANT—Lovely and huge blooms of tyrian pink. Petals are lush and shaggy. The illustration on this page is only a little over half the actual size of well-grown specimens. Each 90c

SHERWOOD PEACH—This is one of the most outstanding varieties known. Its giant, 12-inch blooms are a lovely combination of apricot and orange, and its plants are both well shaped and vigorous. Each \$1.00

SHIRLEY WESTWELL—In our opinion this is one of the finest scarlet dahlias to date. Plants begin to bloom early and continue until frost. Flowers are of the highest quality, with perfect stems and unfading color, even in hottest weather. Each \$1.50

TOWN TOPIC—A very striking bi-color. Petals are deep purple, with startling white tips. Vigorous plants. An attractive and popular variety. Large. Each 80c



LARGE FLOWERED CACTUS DAHLIAS

- ABBOTT**—Deep amaranth red, semi-cactus. Each 80c
- ANIMATO**—Delicate shell-pink. 4-inch flowers. Each 60c
- BALLEGO'S SURPRISE**—Pure white, 8-inch blooms. Each 75c
- JANE LAUSCHE**—Outstanding 12-in. semi-cactus in rosy mauve shading to white. Many awards. Each \$3.00
- JO BLAAUW**—Orange-pink overlaid with blue-lavender. Large flowered semi-cactus. Paris award 1949. Each \$4.00
- LADY ALICE**—Lemon-yellow shading to white at tips. Gigantic bloom. Stock is limited. Each \$3.00
- LYRIEK**—Orchid beauty with incurving petals. Each \$1.50
- MOTHER BALLEGO**—Warm red semi-cactus. Each 90c
- ORANGE NASSAU**—Orange semi-cactus with golden glow. Each \$1.25
- ORANGE PRINCE**—Narrow petals of pure orange. Each 90c
- ROSENCAVALIER**—Semi-cactus type with 9-inch flowers of rose-apricot shading to yellow in the center. Each \$1.50
- SATAN**—Popular 10-inch scarlet cactus type. Each 90c
- VIVIANNE COPPENS**—Lovely pure rose semi-cactus. Each \$1.00

4 GIANTS

These four giant flowered dahlias are the largest of all, with individual blooms so big they can hide a dinner plate. Fertilize and remove extra buds for prize specimens.

<p>AMY BALLEGO MRS. GEO. LeBOUTILLIER</p>	<p>CLARA CARDER SHERWOOD PEACH</p>
<p>4 Tubers One of each variety, value \$3.35, for.....</p>	<p>\$2.75</p>

WILSHIRE GARDENS
HOQUIAM, WASHINGTON

POSTMASTER: Return postage guaranteed.

U.S. Dept of Agriculture
Library
Washington
D.C.

Sec. 34.66, P. L. & R.
U. S. POSTAGE
PAID
HOQUIAM, WASH
Permit No. 42